



COMPATIBLE WITH  
BraunAbility Remote

COMPATIBLE WITH  
Carodoor

## BraunAbility E-Series

Wheelchair lifts you can rely on.

The E-Series is the next generation workhorse from a brand that is synonymous with high-quality wheelchair lifts. Trusted for over 40 years, BraunAbility has reinvented the wheelchair lift. A modern take on simple, effective and reliable. But there's one thing about the E-Series that is more than meets the eye. Its superior platform stability.

Learn more at

[www.braunability.eu/eseries](http://www.braunability.eu/eseries)



Folding platform



Split platform



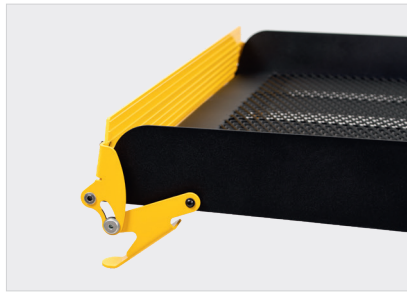
Solid platform

Lift models	Platform width	Platform length	Floor to ground	Weight capacity	Unit weight
E-1320 Folding	740 mm	1320 mm	800 mm	400 kg	133 kg
E-1500 Folding	860 mm	1500 mm	800 mm	400 kg	146 kg
E-1050 Split	740 mm	1050 mm	800 mm	400 kg	137 kg
E-1320 Split	860 mm	1320 mm	800 mm	400 kg	149 kg
E-1050 Solid	740 mm	1050 mm	800 mm	400 kg	124 kg
E-1320 Solid	860 mm	1320 mm	800 mm	400 kg	137 kg
E-1500 Solid	900 mm	1500 mm	800 mm	400 kg	144 kg



**Low Threshold**

To maximise headroom when loading a passenger into the vehicle we gave the baseplate the lowest possible profile. Even when the lift is in the stowed position the threshold stays very low to the floor and will not act as a potential tripping hazard.



**Roll Stop**

A roll-stop is an important safety feature. It prevents any wheelchair on the platform from accidentally rolling too far and off the platform. The roll-stop on the E-Series is mechanical and goes up as soon as the platform leaves the ground.



**Made of Steel**

We manufacture the E-Series using the same well-proven steel we use in all our lifts. While steel is heavier than aluminium it has two major benefits. Steel does not flex as much as aluminium and does not suffer from fatigue cracking after heavy use.



**Surface Coating**

The E-Series wheelchair lifts are treated with a high-quality powder coating. This gives the lifts superior protection against scratches as well as unsightly fingerprints. An E-Series lift will stay functional and looking new for a long time, even in areas with high humidity.



**Surface grip**

The stretch metal of the platform provides a non-slip grip for shoes and tires. Another benefit of the stretch metal is the holes letting dirt, snow and mud fall through to the ground before entering the vehicle.



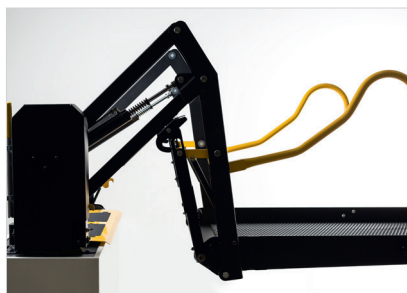
**Easy Service**

Unscrew a single fastener and lift the pump cover straight up. That's how easy it is to access the guts of the pump module. As an added benefit of this cover design, the lift itself can be installed closer to the vehicle's walls. In other words tighter installations.



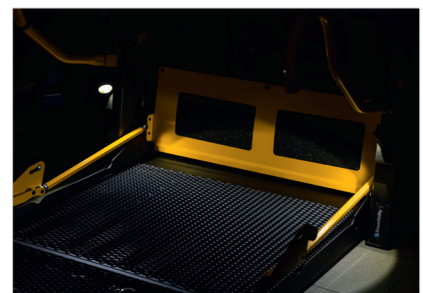
**Durable and intuitive hand pendant**

Designed to take a beating the robust hand control features two rocker switches that let you control all the functions of the lift: fold, unfold, up and down. The plastic body makes the pendant comfortable to hold in all temperatures.



**Improved Kick-out**

The kick-out is how far out the lift platform reaches. More specific it's the distance between the base of the lift and the platform. The ample kick-out of the E-Series means better bumper clearance and makes installation possible in an even wider variety of vehicles.



**Light Kit**

When using the E-Series in low-light situations, our optional light kit provides platform light and all-around improved visibility for the operator, user as well as bystanders.